



## Antenna Adapter Installation Instructions

1. Locate the straight end of the Antenna Adaptor cable. (Figure A)
2. Fully insert the straight end of Antenna Adaptor cable into the end of Antenna connector. (Figure B)
3. Fully insert the right angle end of Antenna Adaptor cable (Figure C) into the Satellite connector ✖ of SXAR1 Receiver (Figure D).
4. Position the Antenna such that the SXM signal strength indicates “good”. The top of the Antenna should always point up.

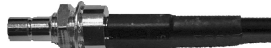


Figure A

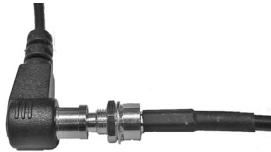


Figure B



Figure C



Figure D

The Antenna should be located inside the aircraft, in an area with an unobstructed view of the sky. When the SXAR1 Receiver is paired to the device, the weather app will provide the current signal strength on the device information page.

If a signal strength of “**poor**” is shown, the data displayed by the app may become interrupted. Reposition the Antenna such that the SXM signal strength indicates a “**good**” condition.

**NOTE:** Heated windshields may interfere with the Antenna’s ability to receive the signal. A location nearer to a non-heated side window should be considered for the Antenna.

**WARNING:** The Antenna is equipped with a strong magnet that may affect some instruments. Be careful to place the Antenna so that the magnet does not interfere with other instruments.

**GPS NOTE:** The other port in Figure D ⊕ is for an optional external GPS antenna. The Garmin GA 25 MCX is recommended.